

ARCOBALENO SELF-EXTINGUISHING PLIABLE CONDUITS

Medium pliable conduit FK 15

GENERAL CHARACTERISTIC

Name: FK15	Standard: IEC EN 61386-1; IEC EN 61386-22
Colour: medium natural white, black, green, light blue, brown, lilac	Application field: electrical systems and/or data transmission for all types of environment
Material: PVC	Installation type: mainly flush-mounted in floors, walls and/or ceilings.
Length supplied: depends on the diameter	Suitable for applications inside false ceilings and floating floors

Characteristic according to IEC/EN 61386-22	Test results	Classification code
Resistance to compression:	Medium - 750 N	3
Resistance to impact:	Medium - 2 J	3
Lower temperature range:	-5 °C	2
Upper temperature range:	+60 °C	1
Resistance to bending:	Pliable	2
Electrical characteristics:	With electrical insulating characteristics	2
Protection against ingress of solid objects		
Without accessories:		-
With GF coupling:		4
Protection against ingress of water		0
Resistance against corrosion:	Not applicable to plastic conduit systems	-
Resistance to flame propagation:	Non-flame propagating	1
Insulation resistance: > 100 MΩ at 500 V for 1 minute		
Dielectric rigidity: 2000 V for 15 minutes		

COEXTRUDED SELF-EXTINGUISHING PLIABLE CONDUITS

Medium pliable conduit FKCO

GENERAL CHARACTERISTIC	
Name: FKCO	Standard: IEC EN 61386-1; IEC EN 61386-22
Colour(*): light grey, black, green, light blu, brown, lilac	Application field: electrical systems and/or data transmission for all types of environment
Material: PVC (internal wall), PVC plastified (external coating)	Installation type: mainly for self-leveling liquid concrete. Suitable also to be installed flush-mounted in floors, walls and ceilings and inside false ceilings and floating floors.
Length supplied: depends on the diameter	

(*) Conduits have inner walls colour natural gray, with exception of light gray versions that have inner walls colour dark gray.

Characteristic according to IEC/EN 61386-22	Test results	Classification code
Resistance to compression:	Medium - 750 N	3
Resistance to impact:	Medium - 2 J	3
Lower temperature range:	-5 °C	2
Upper temperature range:	+60 °C	1
Resistance to bending:	Pliable	2
Electrical characteristics:	With electrical insulating characteristics	2
Protection against ingress of solid objects		
	Without accessories:	0
	With GF coupling:	4
Protection against ingress of water		0
Resistance against corrosion:	Not applicable to plastic conduit systems	0 (**)
Resistance to flame propagation:	Non-flame propagating	1
Insulation resistance: > 100 MΩ at 500 V for 1 minute		
Dielectric rigidity: 2000 V for 15 minutes		

(**) The conduits being made of plastic material are naturally resistant to corrosion.

SELF-EXTINGUISHING PLIABLE CONDUITS

Medium pliable conduit FK MF

GENERAL CHARACTERISTIC	
Name: FKMF	Standard: IEC EN 61386-1; IEC EN 61386-22
Colour: Grey	Application field: electrical systems and/or data transmission for all types of environment
Material: Polypropilene	Installation type: flush installation, surface installation, buried in concrete.
Length supplied: depends on the diameter	Suitable for soil, machinery and equipment installations

Characteristic according to IEC/EN 61386-22	tests results	Classification code
Resistance to compression:	Medium - 750 N	3
Resistance to impact:	Medium - 2 J	3
Lower temperature range:	-5 °C	2
Upper temperature range:	+105 °C	3
Resistance to bending:	Pliable	2
Electrical characteristics:	With electrical insulating characteristics	2
Protection against ingress of solid objects		-
	Without accessories:	-
	With GF coupling:	4
Protection against ingress of water:		0
Resistance against corrosion:	Not applicable to plastic conduit systems	-
Resistance to flame propagation:	Non-flame propagating	1
Insulation resistance: > 100 MΩ at 500 V for 1 minute		
Dielectric rigidity: 2000 V for 15 minutes		

SELF-RECOVERING, SELF-EXTINGUISHING, HALOGEN-FREE PLIABLE CONDUIT

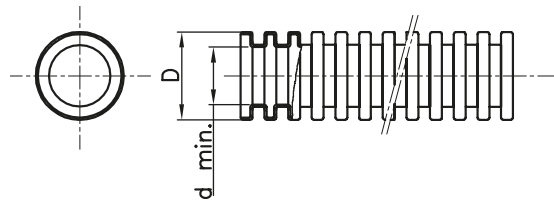
Self recovering; self extinguishing, LOW SMOKE ZERO HALOGEN ICTA pipes

GENERAL CHARACTERISTIC	
Name: ICTA	Application field: electrical systems and/or data transmission for all types of environment. Particularly suitable for installations in public places: schools, cinemas, theatres, underground systems, etc.
Colour: grey RAL 7035 - dark grey - green - light blue	Installation type: mainly flush-mounted in floors, walls and ceilings buried in concrete. Suitable for applications inside false ceilings and floating floors
Material: polypropylene self-extinguishing halogen-free, in compliance with CEI EN 60754-2 (CEI EN 50267-2-2) and EN 61034-2	
Length supplied: depends on the diameter	
Standard: IEC EN 61386-1; IEC EN 61386-22	

Characteristic according to IEC/EN 61386-22	Test results	Classification code
Resistance to compression:	Medium - 750 N	3
Resistance to impact:	Heavy - 6 J	4
Lower temperature range:	-5 °C	2
Upper temperature range:	+90 °C	2
Resistance to bending:	Pliable / self recovering	3
Electrical characteristics:	With electrical insulating characteristics	2
Protection against ingress of solid objects		
Without accessories:		-
With GF coupling:		4
Protection against ingress of water		0
Resistance against corrosion:	Not applicable to plastic conduit systems	-
Resistance to flame propagation:	Non-flame propagating	1
Insulation resistance: > 100 MΩ at 500 V for 1 minute		
Dielectric rigidity: 2000 V for 15 minutes		

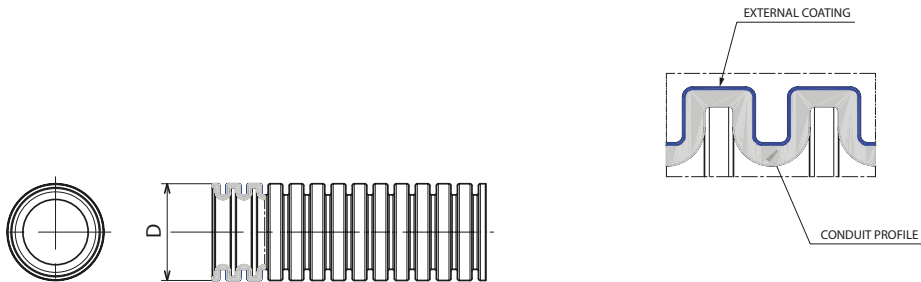
Dimension tables

FK 15 - ARCOBALENO MEDIUM PLIABLE CONDUIT



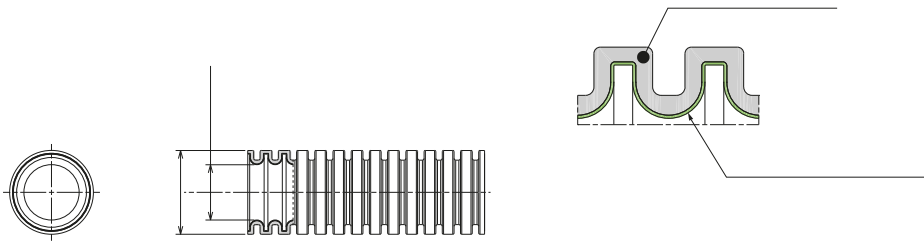
Natural white		Black		Green		Light blue		Brown		Lilac		conduit Ø (mm)	D	d. min.	
Without cable puller-feeder	With cable puller-feeder	Without cable puller-feeder	With cable puller-feeder	Without cable puller-feeder	With cable puller-feeder	Without cable puller-feeder	With cable puller-feeder	Without cable puller-feeder	With cable puller-feeder	Without cable puller-feeder	With cable puller-feeder				
Code	Code	Code	Code	Code	Code	Code	Code	Code	Code	Code	Code				
DX 16 216	DX 16 316	DX 15 016	DX 15 116	DX 15 216	DX 15 316	DX 15 416	DX 15 516	DX 15 616	DX 15 716	DX 15 816	DX 15 916	16	16	0 -0.3	10.7
DX 16 220	DX 16 320	DX 15 020	DX 15 120	DX 15 220	DX 15 320	DX 15 420	DX 15 520	DX 15 620	DX 15 720	DX 15 820	DX 15 920	20	20	0 -0.3	14.1
DX 16 225	DX 16 325	DX 15 025	DX 15 125	DX 15 225	DX 15 325	DX 15 425	DX 15 525	DX 15 625	DX 15 725	DX 15 825	DX 15 925	25	25	0 -0.4	18.3
DX 16 232	DX 16 332	DX 15 032	DX 15 132	DX 15 232	DX 15 332	DX 15 432	DX 15 532	DX 15 632	DX 15 732	DX 15 832	DX 15 932	32	32	0 -0.4	24.3
DX 16 240	DX 16 340	DX 15 040	DX 15 140	DX 15 240		DX 15 440		DX 15 640		DX 15 840		40	40	0 -0.4	31.2
DX 16 250	DX 16 350	DX 15 050	DX 15 150	DX 15 250		DX 15 450		DX 15 650		DX 15 850		50	50	0 -0.5	39.6
DX 16 263	DX 16 363	DX 15 063	DX 15 163									63	63	0 -0.6	50.6

FKCO - COEXTRUDED SELF-EXTINGUISHING PLIABLE CONDUITS



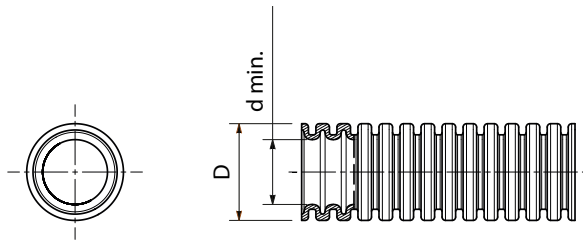
Light grey	Black	Green	Light blue	Brown	Lilla	Ø conduit (mm)	D	
Code	Code	Code	Code	Code	Code			
DX 16 220 C	DX 15 020 C	DX 15 220 C	DX 15 420 C	DX 15 620 C	DX 15 820 C	20	20	0 -0.3
DX 16 225 C	DX 15 025 C	DX 15 225 C	DX 15 425 C	DX 15 625 C	DX 15 825 C	25	25	0 -0.4
DX 16 232 C	DX 15 032 C	DX 15 232 C	DX 15 432 C	DX 15 632 C	DX 15 832 C	32	32	0 -0.4
DX 16 240 C	DX 15 040 C	DX 15 240 C	DX 15 440 C	DX 15 640 C	DX 15 840 C	40	40	0 -0.4

Medium pliable conduit FK MF



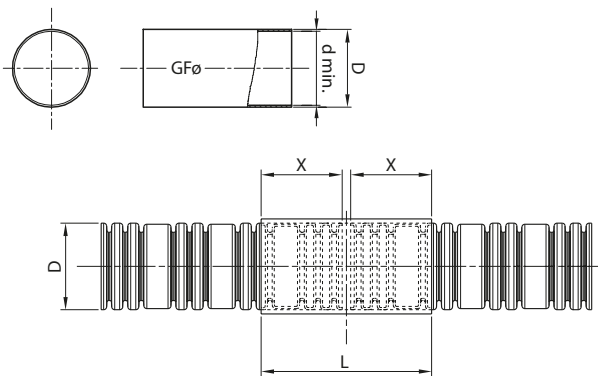
Code	Ø conduit (mm)	D	d.min	inner coating	inner coating (colour)
DX 24 216 N	16	16 0 - 0.3	10.15		
DX 24 220 N	20	20 0 - 0.3	13.20	(*)	GREEN
DX 24 225 N	25	25 0 - 0.4	17.50	(*)	
DX 24 232 N	32	32 0 - 0.4	22.90	(*)	
DX 24 240 N	40	40 0 - 0.4	29.90		
DX 24 250 N	50	50 0 - 0.5	39.20		
DX 24 263 N	63	63 0 - 0.6	51.10		

ICTA - SELF-RECOVERING, SELF-EXTINGUISHING, HALOGEN-FREE MEDIUM PLIABLE CONDUIT



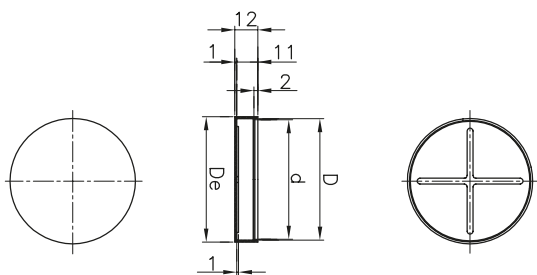
Grey RAL 7035		Dark grey		Green		Light blue				
Without cable puller-feeder	With cable puller-feeder	Without cable puller-feeder	With cable puller-feeder	Without cable puller-feeder	With cable puller-feeder	Without cable puller-feeder	With cable puller-feeder			
Code	Code	Code	Code	Code	Code	Code	Code	conduit Ø (mm)	D	d. min.
DX 20 016	DX 20 116	DX 20 416	DX 20 516	DX 22 016	DX 22 116	DX 23 016	DX 23 116	16	16	0 -0.3
DX 20 020	DX 20 120	DX 20 420	DX 20 520	DX 22 020	DX 22 120	DX 23 020	DX 23 120	20	20	0 -0.3
DX 20 025	DX 20 125	DX 20 425	DX 20 525	DX 22 025	DX 22 125	DX 23 025	DX 23 125	25	25	0 -0.4
DX 20 032	DX 20 132	DX 20 432	DX 20 532	DX 22 032	DX 22 132	DX 23 032	DX 23 132	32	32	0 -0.4
DX 20 040	DX 20 140	DX 20 440	DX 20 540	DX 22 040	DX 22 140	DX 23 040	DX 23 140	40	40	0 -0.4
DX 20 050	DX 20 150	DX 20 450	DX 20 550	DX 22 050	DX 22 150	DX 23 050	DX 23 150	50	50	0 -0.5
DX 20 063	DX 20 163	DX 20 463	DX 20 563	DX 22 063	DX 22 163	DX 23 063	DX 23 163	63	63	0 -0.6

PLIABLE CONDUIT COUPLING - IP40



Code	Ø conduits	D	d. min.	L	X
DX 52 016	16	17.9	15.9	60	16
DX 52 020	20	21.9	19.9		20
DX 52 025	25	26.8	24.8		25
DX 52 032	32	33.8	31.8	80	30
DX 52 040	40	41.8	39.8		32
DX 52 050	50	51.8	49.8	125	42
DX 52 063	63	64.7	62.7		50

PLIABLE CONDUIT CAP



Code	For conduits Ø (mm)	D	De	d.
DX 52 116	16	16	18	15
DX 52 120	20	20	22	19
DX 52 125	25	25	27	24
DX 52 132	32	32	34	31
DX 52 140	40	40	42	39
DX 52 150	50	50	52	49
DX 52 163	63	63	65	62